



ASPÖCK TPMS

REIFENDRUCK-KONTROLLSYSTEM
gemäß Regelung ECE 141

TYRE PRESSURE MONITORING
SYSTEM, according to ECE R141



aspoeck.com



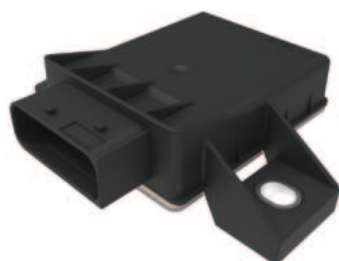
PRODUCT INFO





ASPÖCK TPMS

REIFENDRUCK-KONTROLLSYSTEM GEMÄSS NEUER ECE 141 REGELUNG
TYRE PRESSURE MONITORING SYSTEM ACC. TO THE NEW ECE 141 REGULATION



TPMS Receiver RX18



TPMS Sub-Receiver eRX



TPMS Sensor

FEATURES

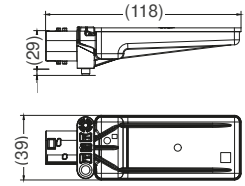
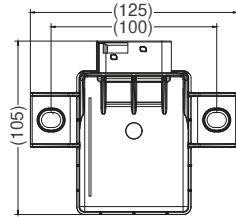
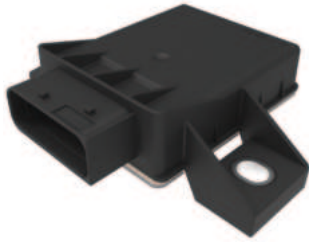
KOMPATIBEL MIT DEN GÄNGIGSTEN EBS-MARKEN (WABCO/ZF, KNORR-BREMSE, HALDEX)
COMPATIBLE WITH ALL COMMON EBS BRANDS (WABCO/ZF, KNORR-BREMSE, HALDEX)

AUTOMATISCHE SENSORERKENNUNG „AUTO LOCATE“
AUTOMATIC SENSOR DETECTION “AUTO-LOCATE”

KABELSYSTEM ANPASSBAR AN KUNDENSPEZIFISCHE ANFORDERUNGEN
CABLE SYSTEM ADAPTABLE ON CUSTOMER SPECIFIC DEMANDS

STAY TUNED 



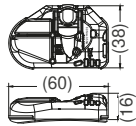


ASPÖCK TPMS RECEIVER MAXRX18

TECHNISCHE DATEN TPMS Receiver Rx18 TECHNICAL FACTS TPMS Receiver Rx18	
SPANNUNGSBEREICH/LEISTUNGS-AUFNAHME: VOLTAGE RANGE/ POWER CONSUMPTION:	8 - 32 V
NENNSPANNUNG: NOMINAL VOLTAGE:	12V / 24V
GEHÄUSEMATERIAL: HOUSING MATERIAL:	Nylon, Messing Nylon, brass
TEMPERATURBEREICH: TEMPERATURE RANGE:	-40°C - +85°C
GEWICHT: WEIGHT:	120 g
SCHUTZART: PROTECTION:	IP 6K9K ADR
EMV-ZULASSUNG: EMC APPROVAL:	E24 10R-06 3521

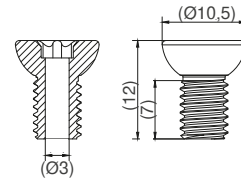
ASPÖCK TPMS SUB - RECEIVER ERX

TECHNISCHE DATEN TPMS Sub - Receiver eRX TECHNICAL FACTS TPMS Sub - Receiver eRX	
GEHÄUSEMATERIAL: HOUSING MATERIAL:	Nylon, Messing Nylon, brass
TEMPERATURBEREICH: TEMPERATURE RANGE:	-40°C - +85°C
GEWICHT: WEIGHT:	48 g
SCHUTZART: PROTECTION CLASSIFICATION:	IP 6K9K ADR
EMV-ZULASSUNG: EMC APPROVAL:	E24 10R-06 3125



ASPÖCK TPMS SENSOR

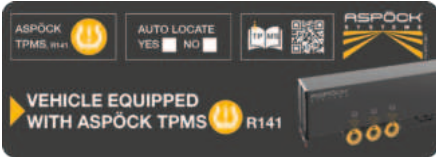
TECHNISCHE DATEN TPMS Sensor TECHNICAL FACTS TPMS Sensor	
GEHÄUSEMATERIAL: HOUSING MATERIAL:	Glasverstärktes Nylon und Edelstahl Glass-reinforced nylon and stainless steel
BATTERIE BATTERY	TYP: TYPE: Lithium-Knopfzelle (nicht austauschbar) Lithium coin cell (non-replaceable)
	LEBENSDAUER: LIFE: 5 - 7 Jahre 5 - 7 years
GEWICHT: WEIGHT:	25,1 g
DRUCKMESSBEREICH: PRESSURE SENSING RANGE:	0 to 13.915 Bar
PRESSURE SENSING ACCURACY: GENAUIGKEIT DES DRUCKSENSORS:	+/- 220 mBar
TEMPERATURBEREICH: TEMPERATURE RANGE:	-40°C - +120°C
TEMPERATURERFASSUNGSBEREICH: TEMPERATURE SENSING RANGE:	-40°C - +120°C
GENAUIGKEIT DER TEMPERATURERFASSUNG: TEMPERATURE SENSING ACCURACY:	+/- 3°C
SCHUTZART: PROTECTION CLASSIFICATION:	IPX6K
EMV-ZULASSUNG: EMC APPROVAL:	E24 10R-06 3558



ASPÖCK TPMS SENSOR SCREW M6



	BEST. NR OEM PART NO OEM	BEST. NR AM PART NO AM	VERSION	ZUSATZ ADD ON
SYSTEM KOMPONENTEN SYSTEM PARTS	75-0210-007	75-0210-001	[A]	TPMS Receiver Rx18
	75-0210-107	75-0210-101	[B]	TPMS Sub Receiver eRx
	75-0210-207		[C]	TPMS Valve-Sensor
		75-0210-204		TPMS Valve-Sensor + Schraube M6 + Sticker Felge + Montageanleitung TPMS Valve-Sensor + screw M6 + sticker rim + mounting instruction
	14-1620-057			TPMS Valve-Sensor Schraube M6 TPMS Valve-Sensor screw M6
	14-4314-007			TPMS cradle for sensor mounting
	14-4315-007			TPMS strap for sensor strap mounting
		14-4315-014		TPMS strap + cradle kit without sensor
	10-0211-327			Sticker Anhänger: 140 x 50 mm Sticker trailer: 140 x 50 mm
	10-0211-337			Sticker Felge: 60 x 20 mm Sticker rim: 60 x 20 mm

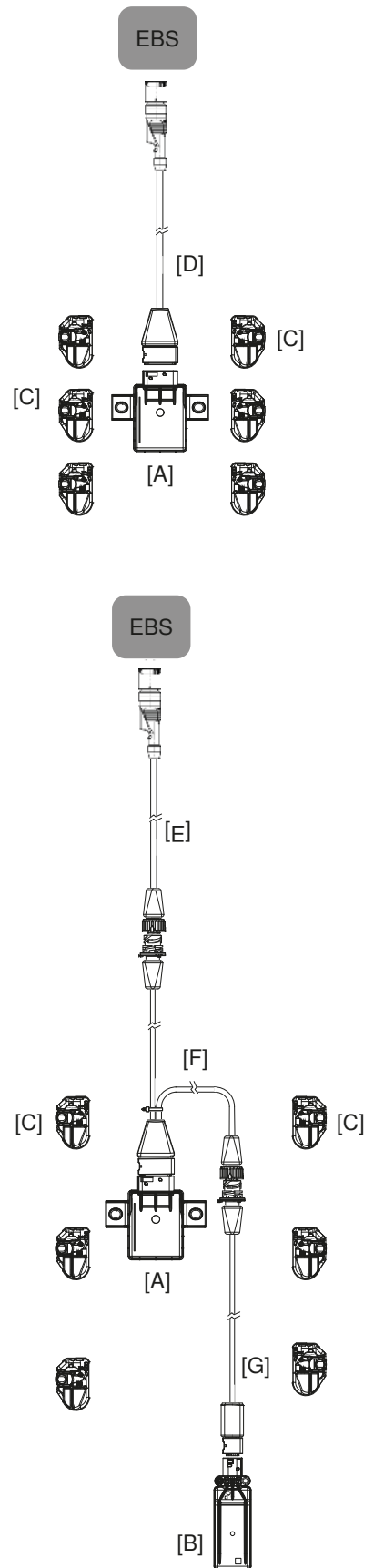


Sticker Anhänger: 140 x 50 mm
Sticker trailer: 140 x 50 mm



Sticker Felge: 60 x 20 mm
Sticker rim: 60 x 20 mm

	BEST. NR OEM PART NO OEM	BEST. NR AM PART NO AM	VERSION	ZUSATZ ADD ON	
KABEL CABLES	78-7022-007	78-7022-004	[D]	TPMS Knorr EBS3-Rx18	1 m
	78-7022-017	78-7022-014	[D]	TPMS Knorr EBS3-Rx18	6 m
	78-7022-057	78-7022-054	[E]	TPMS Knorr EBS3-K1.2	1 m
	78-7022-307	78-7022-304	[D]	TPMS Wabco EBS3 - Rx18	2 m
	78-7022-317	78-7022-314	[D]	TPMS Wabco EBS3 - Rx18	6 m
	78-7022-357	78-7022-354	[E]	TPMS Wabco EBS3 - K1.2	2 m
	78-7022-707	78-7022-704	[D]	TPMS Haldex EBS4 - Rx18	1 m
	78-7022-717	78-7022-714	[D]	TPMS Haldex EBS4 - Rx18	6 m
	78-7022-757	78-7022-754	[E]	TPMS Haldex EBS4 - K1.2	1 m
	78-7021-607	78-7021-604	[F]	TPMS K1.2 - Rx18 + K1.2	1 m
	78-7021-407	78-7021-404	[G]	TPMS K1.2 - eRx	1 m



product information_TPMS_V6 | 2024-08
Misprints, technical changes and illustrations are subject to change.
© Aspöck Systems GmbH

Non-compliance with the information given (e.g. temperature) results in the exclusion of warranty/liability. For details, see the mounting instructions/TSD www.aspoeck.com.